

MODERN TROUTDALE TOWNHOME W/ADU

191 SW LANCASTER CT.,
TROUTDALE, OR 97060

Offered at \$569,900
MLS# 23606535



3 BEDROOMS | 3.5 BATHROOMS | 1,709 SQ FT | YR BLT 2023

Lancaster Park is a brand new town home community in a prime Troutdale neighborhood. Located at the Gateway to the Columbia River Gorge, enjoy close proximity to Edgefield, the Columbia River, Mt. Hood and many renowned hiking and recreational hot spots. Enjoy afternoons at the community play structure (Coming soon,) or evenings by the fire pit!

This brand new townhome features luxury inclusions such as quartz countertops, stainless appliances, hard surface flooring lower and upper level, LED lighting and designer selected deco packages.



JENNIFER WALSH & SCOTT PASKILL

Real Estate Brokers



503-716-8412

info@thewayhomepdx.com

Premiere
PROPERTY
Group, LLC

WWW.ARBORHOMES.COM



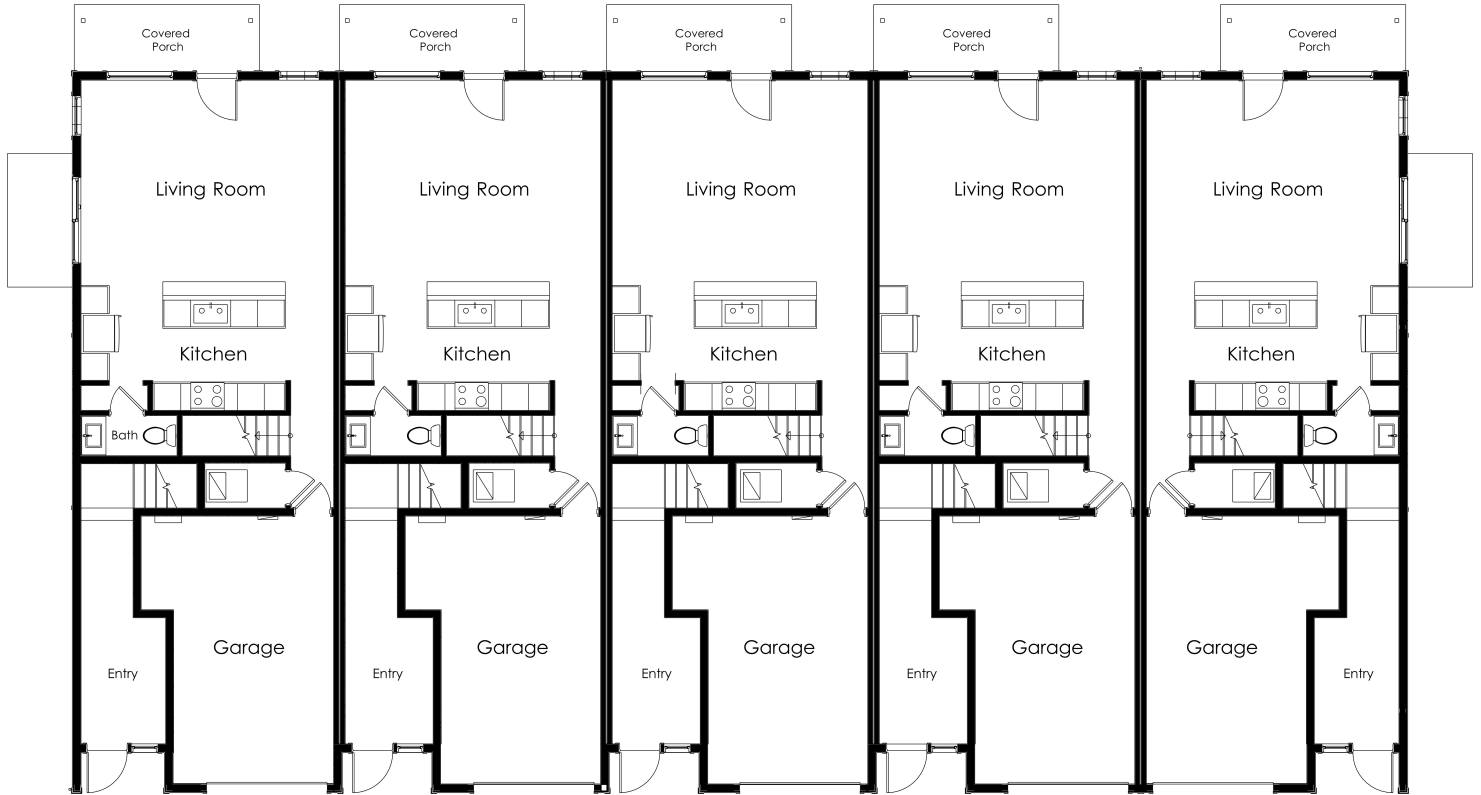


ADDITIONAL FEATURES:

- Lot #16
- 2 bedroom main home plus 1 bedroom ADU
- Main home includes 2 en-suite bathrooms plus one powder room
- Kitchen with large island and stainless appliances
- Soft close cabinets and drawers
- ADU has separate entrance, kitchen, great room & single bathroom
- 1 car garage plus driveway and opener
- Mini split heating & cooling in main home
- Live in one side and rent the other!
- Easy low maintenance lifestyle
- Troutdale Elementary
- Walt Morey Middle, Reynolds High School



MAIN LEVEL



UPPER LEVEL

