

MODERN TROUTDALE TOWNHOME

184 SW LANCASTER COURT,
TROUTDALE, OR 97060

Offered at \$399,900
MLS# 22546302



3 BEDROOMS | 2.5 BATHROOMS | 1,469 SQ FT | YR BLT 2022

Lancaster Park is a brand new town home community in a prime Troutdale neighborhood. Located at the Gateway to the Columbia River Gorge, enjoy close proximity to Edgefield, the Columbia River, Mt. Hood and many renowned hiking and recreational hot spots. Enjoy afternoons at the community play structure (Coming soon,) or evenings by the fire pit!

This brand new townhome features luxury inclusions such as quartz countertops, stainless appliances, hard surface flooring throughout the main level, built-in drop zone, LED lighting and designer selected deco packages. Primary suite and a spacious loft for home office or bonus family room.



JENNIFER WALSH & SCOTT PASKILL

Real Estate Brokers

503-716-8412

info@thewayhomepdx.com



Premiere
PROPERTY
Group, LLC

WWW.ARBORHOMES.COM



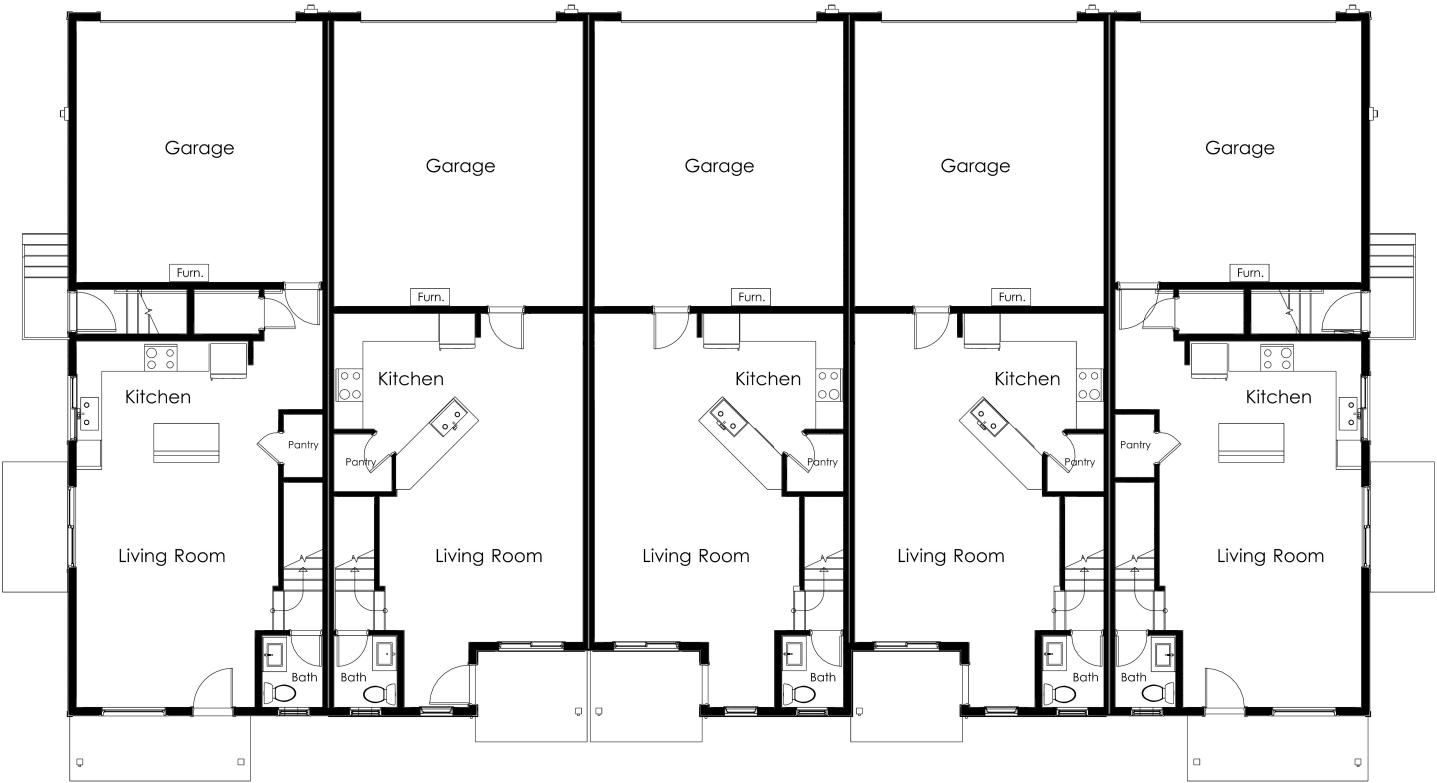


ADDITIONAL FEATURES:

- Lot #50
- Roller shade window coverings included
- Peninsula with eating bar
- Pendant lighting
- Walk in pantry
- Soft close cabinets and drawers
- Large primary suite with walk-in closet
- 2 car garage plus driveway and opener
- Low maintenance care for busy lives!
- Troutdale Elementary
- Walt Morey Middle School
- Reynolds High School



MAIN LEVEL



UPPER LEVEL

