

# MODERN TROUTDALE TOWNHOME



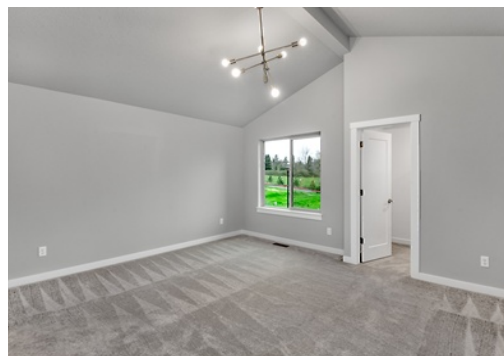
220 SW LANCASTER COURT  
TROUTDALE, OR 97060

\$439,900

3 bedrooms, 2.5 baths plus loft • 1469 SF • 2 car garage • Homesite #47

Lancaster Park is a brand new town home community in a prime Troutdale neighborhood. Located at the Gateway to the Columbia River Gorge, enjoy the close proximity to Edgefield, the Columbia River, Mt. Hood and many renowned hiking and recreational hot spots. Enjoy afternoons at the community play structure (coming soon,) or evenings by the fire pit!

This brand new townhome features luxury inclusions such as quartz countertops, stainless appliances, hard surface flooring throughout the main level, built-in drop zone, LED lighting and designer selected deco packages. Enjoy a vaulted primary suite and a spacious loft for home office or bonus family room.



*Premiere*  
**PROPERTY**  
*Group, LLC*

JENNIFER WALSH &  
SCOTT PASKILL

Real Estate Brokers

503-716-8412

Info@TheWayHomePDX.com



**ARBOR**  
HOMES

WWW.ARBORHOMES.COM

